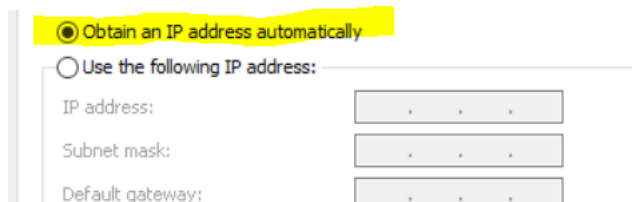


## Telex Firmware Upload Utility Workflow

*This document provides a basic starting point for uploading firmware to a KP-5032*

- 1 Setup the computer and the keypanel on an isolated network. Multiple Keypanels can be updated simultaneously if a simple Ethernet hub is included.
- 2 Set the Keypanel to DHCP Enabled and the computer's Network Interface Card (NIC) to Automatic. Auto discovery happens when the application is executed. The Keypanel and the computer need to be set to Automatic (DHCP) *before* executing the application for the devices to be discovered.

### Windows Network Interface Card setup.



Obtain an IP address automatically

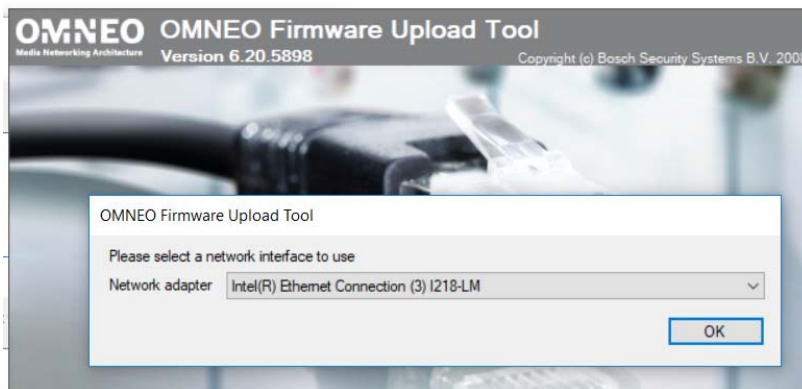
Use the following IP address:

IP address:

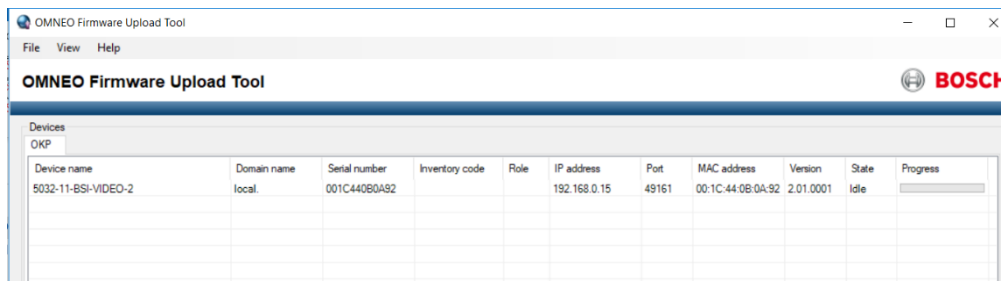
Subnet mask:

Default gateway:

- 3 Execute the Bosch FirmWare Upload Tool application (FWUT)
- 4 When prompted, select the intended NIC as listed in the dialog box on the computer screen. Note: Only when the application executes can you select the NIC. No other opportunity is provided. To change NIC, close then re-execute the Tool.



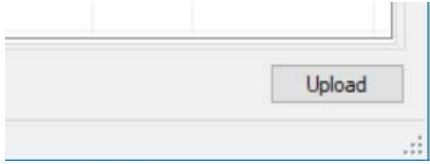
- 5 The FWUT screen should now appear with the auto-discovered, single device listed.



Device name	Domain name	Serial number	Inventory code	Role	IP address	Port	MAC address	Version	State	Progress
5032-11-BSI-VIDEO-2	local.	001C440B0A92			192.168.0.15	49161	00:1C:44:0B:0A:92	2.01.0001	Idle	<div style="width: 100%;"></div>

6 Select the Keypanel (or device) listed.

7 In the lower right corner of the application there is an Upload button...click it.

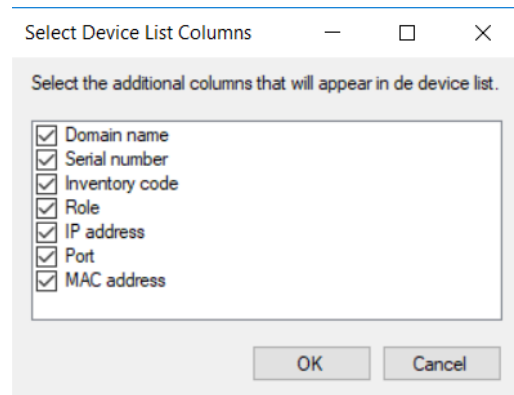
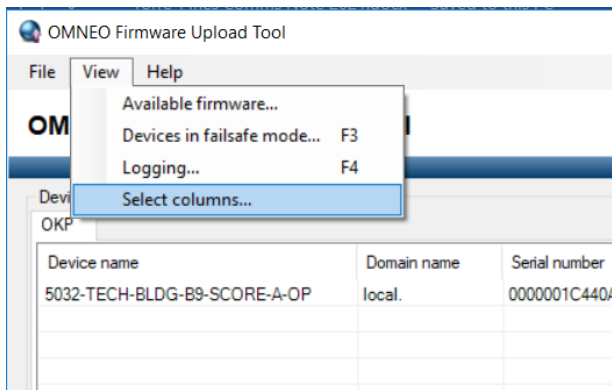


8 The tool will now display a window listing the relevant firmware for the device.

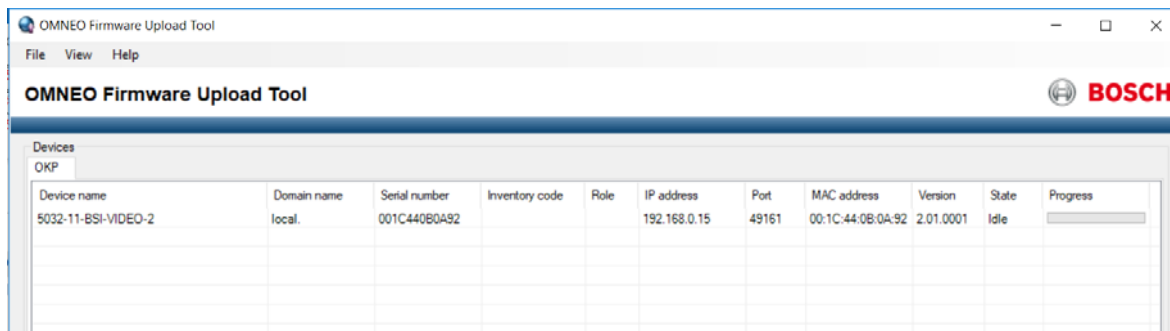
9 Pick the firmware you want. (no RSTP is common. Some IT systems and Ethernet switches will shut down the connected port if RSTP is detected).

OKP	2.3.3	Client and Audio FPGA for the OKP Device (no RSTP)	8 MB
OKP	1.5.3	Client firmware and Audio FPGA for the KP-Series-RVON (no RSTP)	7 MB

10 If this is the first time running the FWUT application, select to show all the available columns by clicking on View and Select column... menuitem. Then scale the applications display area to view all the columns. The progress bar is on the far right. This bar can be hidden and even unknown to the user unless the window is maximized.



11 The progress bar will reach 50% before the Keypanel begins to indicate that the upload is in progress. Be patient...do not power cycle or reboot or disconnect once the upload has begun.



Device name	Domain name	Serial number	Inventory code	Role	IP address	Port	MAC address	Version	State	Progress
5032-TECH-BLDG-B9-SCORE-A-BA	local.	001C440AFE91			192.168.0.16	55766	00:1C:44:0A:FE:91	2.05.0001	Active	<div style="width: 50%;"><div style="background-color: green; height: 10px;"></div></div>

12 Once the FWUT has reached 50%, the Keypanel will display the upload is in progress.

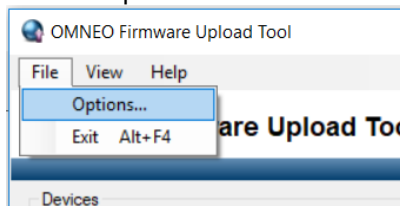


13 Once the upload is complete, power cycle the keypanel to verify the new connection scheme is activated. RVON or OMENO depending on which firmware was uploaded.

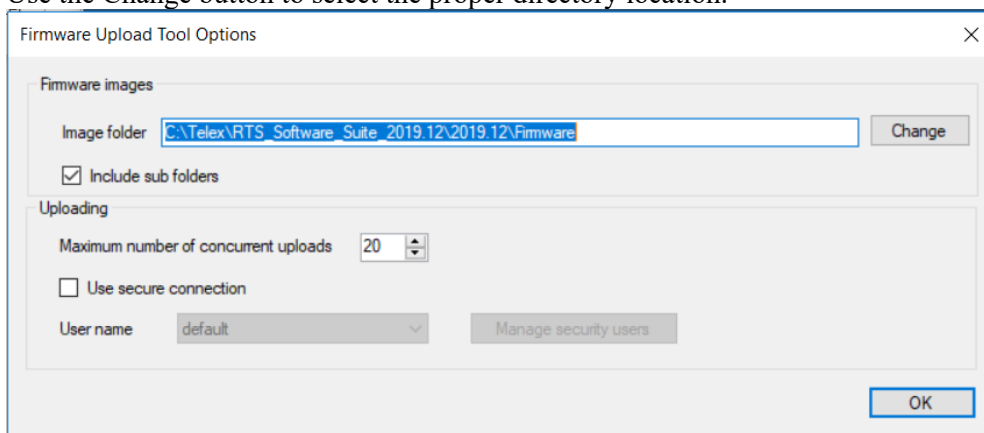


## Closing thoughts:

- A An RVON or OMNEO card is not required to use the FWUT. The computer and the Keypanel are all that is required.
- B Be patient...the upload can take a while.
- C The FWUT needs to be told where the firmware files are located on the computer's hard-drive. Click on File>Options...



Use the Change button to select the proper directory location.



- D This FWUT is not very user-friendly. It is not intuitive, but is simple when understood.